

Inter-Agency and Expert Group on SDG
21-24 October 2019, Addis Ababa

Gender and Environment Statistics:

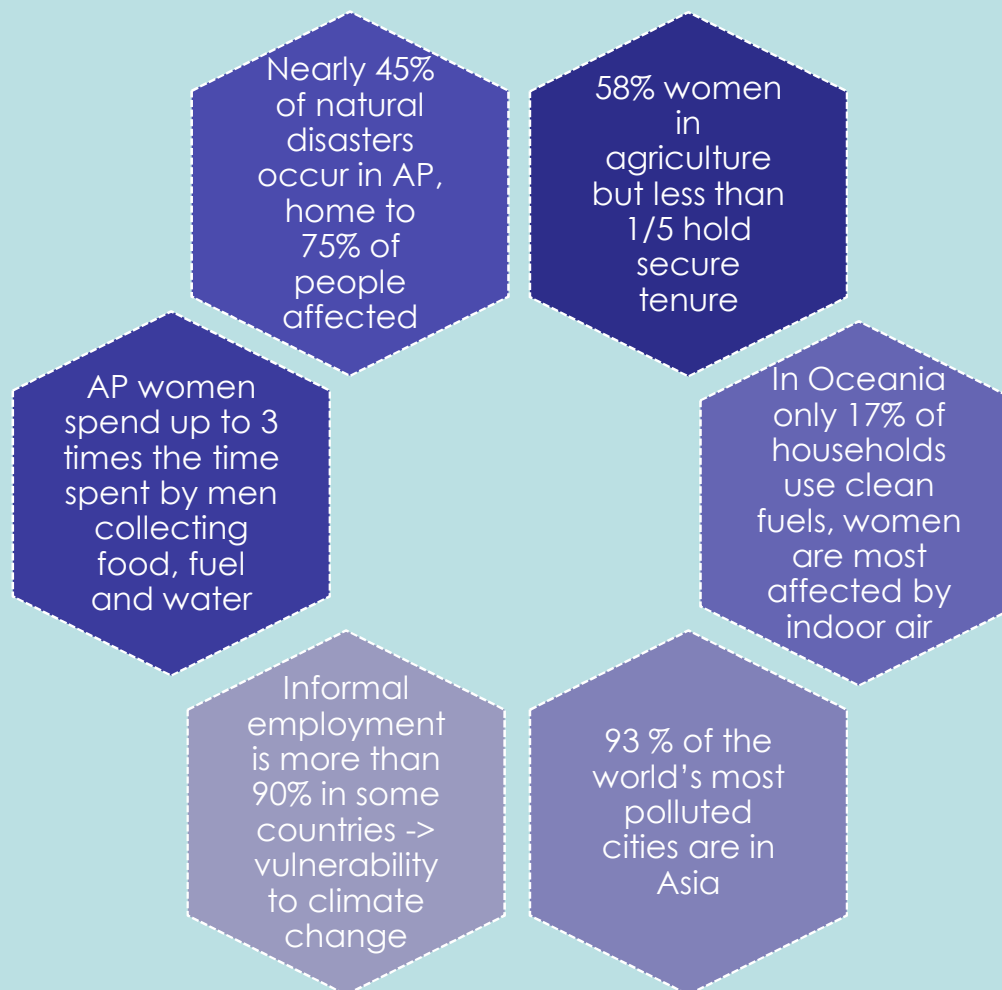
On-going work in the Asia-Pacific region



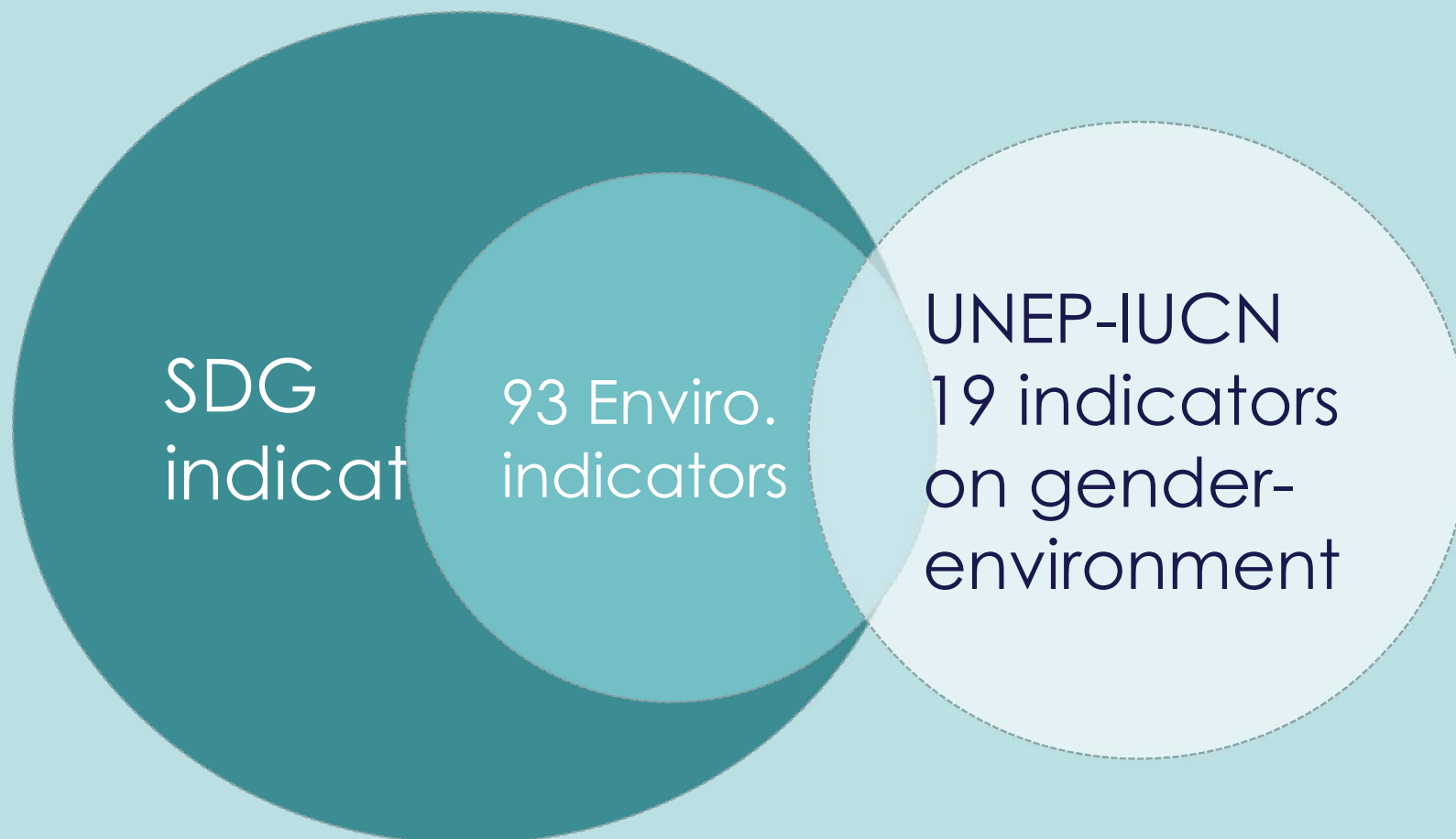
The need to measure the gender-environment nexus

- Beijing Platform for Action (“Women and the Environment”)
- 2030 Agenda for Sustainable Development
- UN Environment Global Gender and Environment Outlook (GGEO 2016)
- Global Framework of Action on Gender Environment and the SDGs (GFA) (UNEA4, March 2019)
- Asia-Pacific experiences:
 - Pacific Roadmap on Gender Statistics (Environment priority thematic area)
 - Disaster Related Statistics Framework (Endorsed by Stats. Commission in 2018)
 - Disaster/environment surveys (Conducted in Indonesia, Bangladesh, planned in Mongolia)
 - Consultation on gender & disaster statistics (countries requested furthering work)
 - Expert Meeting on gender & environment statistics

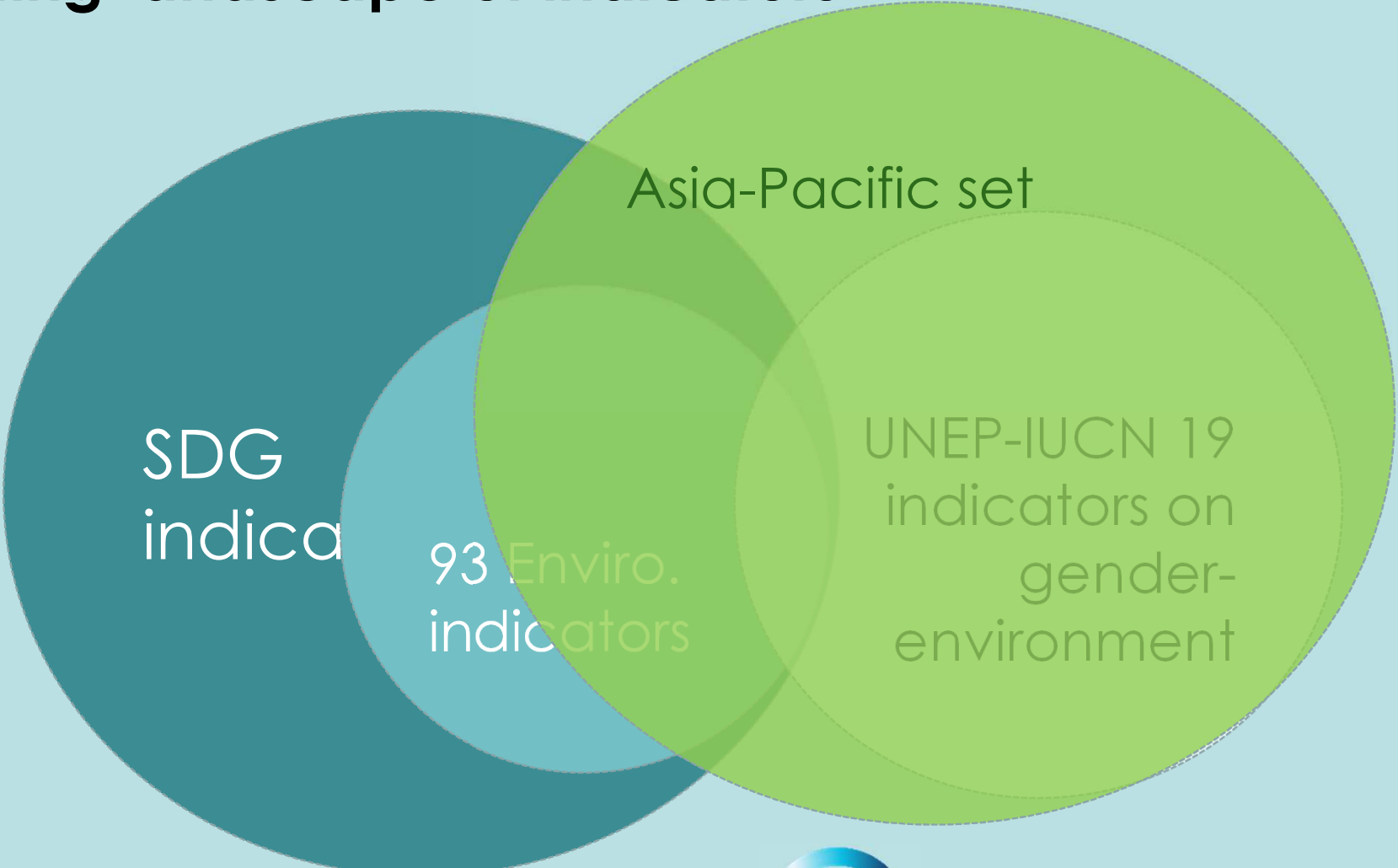
The need to measure the gender-environment nexus in Asia-Pacific



Gender-environment nexus: understanding the existing landscape of indicators



Gender-environment nexus: understanding the existing landscape of indicators



Asia-Pacific set of indicators on gender-environment: Priority areas

A. Land and biodiversity

B. Natural resources including food, energy and water

C. Climate change and disasters

D. Sustainable consumption, production and waste

E. Health, well-being and sanitation

F. Environmental decision-making

Proposed framework to measure the gender-environment nexus in Asia and the Pacific

ASIA-PACIFIC FRAMEWORK

- 7 SDG indicators
- 13 indicators similar to SDGs (require further disaggregation)
- 5 non-SDG indicators
- + context indicators

SDG indicators in the Asia-Pacific framework

Indicator	SDG indic.	AP priority area
Proportion of total adult population with secure tenure rights to land, (a) with legally recognized documentation, and (b) who perceive their rights to land as secure, by sex and type of tenure.	1.4.2	A
(a) Proportion of total agricultural population with ownership or secure rights over agricultural land, by sex; and (b) share of women among owners or rights-bearers of agricultural land, by type of tenure	5.a.1	A
Proportion of countries where the legal framework (including customary law) guarantees women's equal rights to land ownership and/or control	5.a.2	A
Proportion of time spent on unpaid domestic and care work, by sex, age and location		
Average income of small-scale food producers, by sex and indigenous status	2.3.2	D
Extent to which (i) global citizenship education and (ii) education for sustainable development, including gender equality and human rights, are mainstreamed at all levels in (a) national education policies; (b) curricula; (c) teacher education; and (d) student assessment	12.8.1	F
Extent to which (i) global citizenship education and (ii) education for sustainable development (including climate change education) are mainstreamed in (a) national education policies; (b) curricula; (c) teacher education; and (d) student assessment	4.7.1	F

Similar to SDG indicators in the Asia-Pacific framework (1)

Indicator	SDG indic.	AP priority area
Proportion of agricultural area under productive and sustainable agriculture, by sex of land user/owner	2.4.1	A
Proportion of population using safely managed drinking water services, by type of household	6.1.1	B
Proportion of population with access to electricity, by sex of head of household	7.1.1	B
Proportion of population with primary reliance on clean fuels and technology, by main user	7.1.2	B
Number of deaths, missing persons and directly affected persons attributed to hydrometeorological disasters per 100,000 population, by sex	1.5.1 11.5.1 13.1.1	C
Proportion of jobs in sustainable tourism industries out of total tourism jobs, by sex	8.9.2	D
Proportion of population that (a) has convenient access to public transport by location (urban/rural), sex, age and persons with disabilities; and (b) use public transport by location (urban/rural), sex, age and persons with disabilities	11.2.1	D
Mortality and morbidity rates attributed to unsafe water, unsafe sanitation and lack of hygiene, by sex	3.9.2	E

Similar to SDG indicators in the Asia-Pacific framework (2)

Indicator	SDG indic.	AP priority area
Mortality and morbidity rates attributed to environmental causes (unintentional poisoning, air & water quality), by age and sex	3.9.1 3.9.2 3.9.3	E
Proportion of schools with access to (a) electricity; (b) basic drinking water; (c) single-sex basic sanitation facilities; and (d) basic handwashing facilities (as per the WASH indicator definitions)	4.a.1	E
Proportion of population using (a) safely managed sanitation services and (b) a hand-washing facility with soap and water, by type of household	6.2.1	E
Proportion of urban population living in slums, informal settlements or inadequate housing, by sex	11.1.1	E
Proportions of positions in national and local public environment institutions, including (a) the legislatures; (b) the public service; and (c) the judiciary, compared to national distributions, by sex, age, persons with disabilities and population groups	16.7.1	F

Outcomes of meeting of experts in Asia-Pacific (1)

- Expert meeting on Statistics on Gender and the Environment, Bangkok, September 2019
- 57 experts from 18 countries
- Meeting outcomes:
 - Participants recognized the importance of furthering this work
 - Request to establish a regional mechanism (for promoting capacity building, advocacy, fund raising)
 - Experts supported the indicator proposal, with comments to address gap areas
 - Additional priority areas were identified (to be added to framework)

Outcomes of meeting of experts in Asia-Pacific (2)

Additional gap areas			
Exposure to disasters	Environment-related conflict, migration and displacement	Gender-based violence in the context of environment	Harnessing women's traditional ecological knowledge
Women in environment conservation roles	Rural women's leadership on environmental issues	Small-scale industries; environment-related employment and livelihoods	Sustainable production and consumption including sustainable agricultural practices, organic farming and waste management

Way forward: modalities and approaches

- Working paper disseminated (Oct 2019)
- Finalization of indicator set and related consultations with national agencies and experts
 - Consultations with experts to identify indicators for gap areas
 - Coordination with IAEG-SDG group to work on disaggregation of proposed indicators similar to SDG
 - Consultation with IAEG-GS in areas for which indicators/methodology do not exist
- Country support in line with on-going initiatives in ESCAP, UN Women and countries
- Establishing regional mechanism
 - Draw from regional expertise & South-South cooperation
 - Make links with other work in ESCAP & UN Women (SGGST, EPIC, Pacific roadmap, etc.)